

Technical data sheet

CE: Ref 01023536 - UPC/EAN 737859235368
UK: Ref 01023536 - UPC/EAN 737859235368
US: Ref 01023537 - UPC/EAN 737859235375
JP: Ref 01023538 - UPC/EAN 737859235382

Description:

Mademoiselle Célia hanging lamp
Lámpara colgante Mademoiselle Célia

Collection:

Mademoiselle

Mounting:

Pendant

Environment:

Hanging lamp body made of porcelain. Easy to fix to ceiling system.

Installation and assembly:

Follow instructions of the installation guide

Electrical characteristics:

Max. Power: 20W
Tension: CE-UK: 220/240VAC US-JP: 100/125VAC
Frequency: 50/60Hz

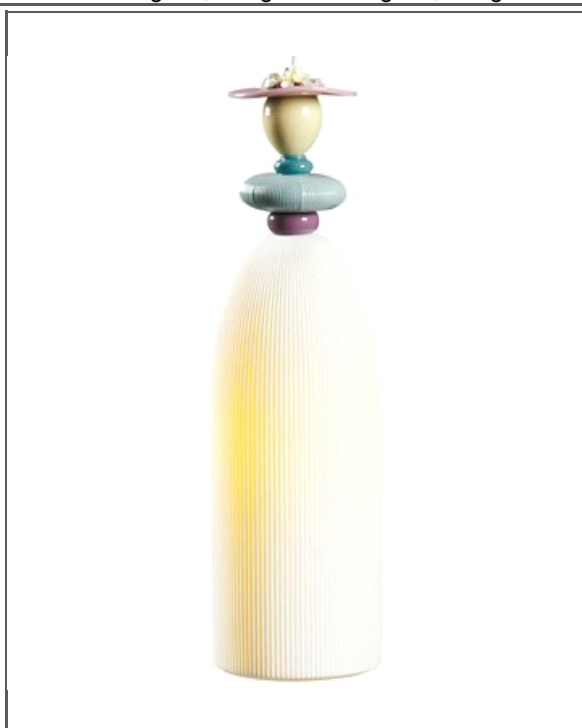
Recommended Bulb

Bulb included
CE: 1 x E27 LED 6W (800Lm) (Bulb included)
US: 1 x E26 LED 6W (800Lm)

Certificates:

Physical characteristics:

1 Box / 19,9 x 24,7 x 53,9 cm / 0,026 m3
 1 Box / 7 3/4 x 9 3/4 x 21 1/4 inches / 1606 in3
 Gross weight 2,35 Kg. / Net weight 1,50 Kg.



Sketch

