

Technical data sheet

CE: Ref 01023906 - UPC/EAN 737859239069
UK: Ref 01023906 - UPC/EAN 737859239069
US: Ref 01023907 - UPC/EAN 737859239069
JP: Ref 01023908 - UPC/EAN 737859239069

Description: **Ivy&Seed - Single hanging lamp. Absolute black**
Ivy&Seed - Lámpara colgante individual. Negro absoluto

Collection: *Ivy & Seed*

Mounting: Hanging lamp

Environment: Inspired in nature's plant motifs: plants, seeds, bulbs, leaves and petals, interpreted with played by round, organic and geometric shapes. The graphics of the collection gives us as a result a number of items with a synthetic, feminine, shapely, edgeless form, that speak to us with a language that is more typical of porcelain than cut glass.

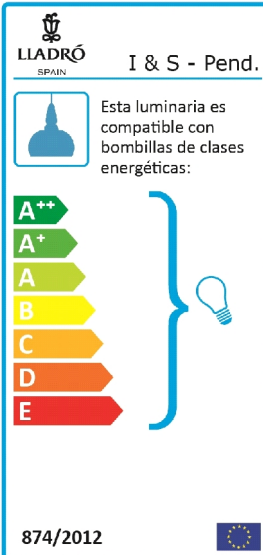
Installation and assembly: Follow instructions of the installation guide

Electrical characteristics:
Max. Power: 60 W
Tension: CE-UK: 220/240VAC US-JP: 100/125VAC
Frequency: 50/60Hz
 Dimmer not included / LED bulb non dimmable

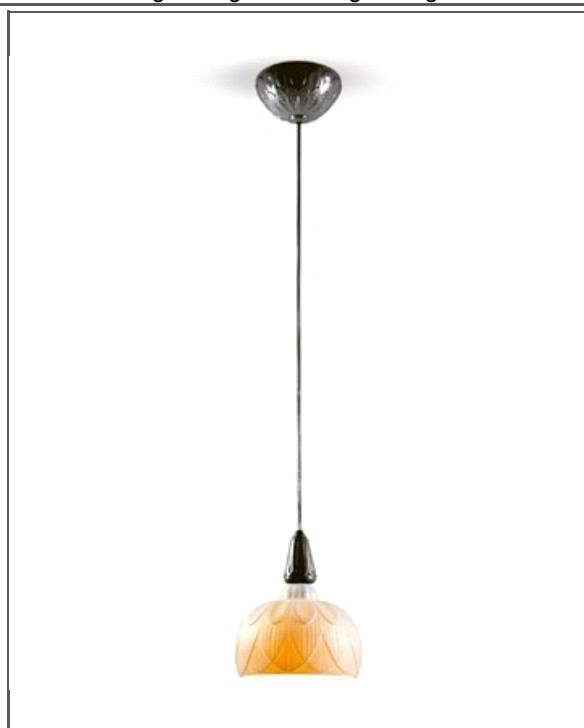
Recommended Bulb
 Bulb not included
CE: 1 x E27 LED 6W 800Lm
US: 1 x E26 LED 6W 800Lm
 6 W

Certificates:
 CE, SASO
 UL

Physical characteristics:
 1 Box / 36,2 x 50,8 x 62,8 cm / 0,115 m3
 1 Box / 14 1/4 x 20 x 24 3/4 inches / 7054 in3
 Gross weight 2 Kg. / Net weight 1 Kg.



LLADRÓ SPAIN I & S - Pend.
 Esta luminaria es compatible con bombillas de clases energéticas:
 A++
 A+
 A
 B
 C
 D
 E
 874/2012



Sketch

